

# BREEDING DISTRIBUTION

TABLE 26. SHUTTLE STALLIONS IN AUSTRALIA 1989/90 - 2004/05

Season	Number of Shuttle Stallions	Total Stallions	% Shuttles to Total Stallions	No. Mares covered by Shuttles	Total mares covered	% mares covered by Shuttles	Av Book Per Shuttle Stallion
1989/90	3	3291	0.1%	163	39075	0.4%	54
1990/91	4	3005	0.1%	272	35501	0.8%	68
1991/92	5	2643	0.2%	353	31733	1.1%	71
1992/93	10	2504	0.4%	776	29707	2.6%	78
1993/94	10	2122	0.5%	827	28356	2.9%	83
1994/95	22	1978	1.1%	1749	27853	6.3%	80
1995/96	35	1776	2.0%	2566	26988	9.5%	73
1996/97	46	1708	2.7%	3373	27207	12.4%	73
1997/98	52	1607	3.2%	4249	27240	15.6%	82
1998/99	65	1457	4.5%	4996	26357	19.0%	77
1999/00	66	1355	4.9%	5452	26687	20.4%	83
2000/01	62	1241	5.0%	5071	26271	19.3%	82
2001/02	63	1181	5.3%	5613	26690	21.0%	89
2002/03	64	1044	6.1%	5149	25216	20.4%	80
2003/04	63	989	6.4%	5371	25485	21.1%	85
2004/05	63	916	6.9%	6095	26311	23.2%	97

Source: Australian Stud Book

Please note: All figures are correct as of 31 July 2005.

TABLE 27. BREEDING DISTRIBUTION BY STATE 2004/05

	NSW	VIC	QLD	WA	SA	TAS	ACT	NT	TOTAL
Stallions	312	213	213	100	49	28	1	0	916
% of total	34.1%	23.3%	23.3%	10.9%	5.4%	3.1%	0.1%	0.0%	
Broodmares*	10291	6525	5491	2828	1844	710	151	42	27882
% of total	36.9%	23.4%	19.7%	10.1%	6.6%	2.5%	0.5%	0.2%	
Foals #	7343	3895	3166	1602	778	383	10	1	17178
% of total	42.7%	22.7%	18.4%	9.3%	4.5%	2.2%	0.1%	0.0%	
Live Foals to Mares Returned	71.4%	59.7%	57.7%	56.6%	42.2%	53.9%	6.6%	2.4%	61.6%
Average Book per Stallion	37	28	23	23	21	20	2	0	30

Note: \* Includes 5856 broodmares not served

# This figure is subject to an increase due to Late Foal Returns

CHART 5. AUSTRALIAN FOAL CROP DISTRIBUTION 2004/05

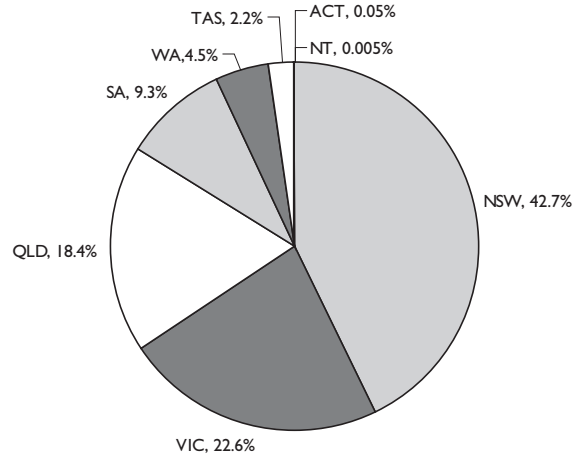


TABLE 28 STALLION DISTRIBUTION BY STATE 1999/00 - 2004/05

YEAR	NSW	VIC	QLD	WA	SA	TAS	ACT	NT	TOTAL
1999/00	454	298	344	148	75	31	1	3	1354
2000/01	413	266	322	142	69	28	1	1	1242
2001/02	409	256	297	133	62	23	1	1	1182
2002/03	368	239	244	109	55	28	0	1	1044
2003/04	346	234	230	107	41	26	1	1	986
2004/05	312	213	213	100	49	28	1	0	916

TABLE 29. BROODMARE DISTRIBUTION BY STATE 1999/00 - 2004/05

YEAR	NSW	VIC	QLD	WA	SA	TAS	ACT	NT	TOTAL
1999/00	11339	7056	6883	3120	2255	798	142	35	31628
2000/01	11319	7061	6681	3143	2281	765	145	36	31431
2001/02	11324	7022	6428	3059	2271	771	134	44	31053
2002/03	11338	7154	6218	3045	2166	766	152	47	30886
2003/04	10905	7081	5960	3004	2050	770	166	41	29977
2004/05	10291	6525	5491	2828	1844	710	151	42	27882

TABLE 30. FOAL DISTRIBUTION BY STATE 1999/00 - 2004/05

YEAR	NSW	VIC	QLD	WA	SA	TAS	ACT	NT	TOTAL
1999/00	7208	4260	3889	1713	1072	388	18	1	18549
2000/01	7338	4310	3628	1819	1178	362	17	7	18659
2001/02	7495	4163	3422	1661	1052	396	8	7	18204
2002/03	7250	4596	3414	1632	965	380	21	5	18263
2003/04	6962	4114	3169	1625	906	438	17	1	17232
2004/05	7343	3895	3166	1602	778	383	10	1	17178

Source: Australian Stud Book



# REGISTRATIONS

## KEY FACTS

All racehorse registrations in Australia are recorded and administered by the Registrar of Racehorses based at the Racing NSW Offices in New South Wales. The functions of the Registrar of Racehorses include:

- Registration of all horses to race in Australia
- Processing and recording Leases
- Naming of Racehorses
- Registration of Colours
- Information for Visiting & Imported Horses
- Registration of Syndicates
- Processing and recording Transfers of Ownership

FALBRAV – ARROWFIELD



# REGISTRATIONS

TABLE 31. AUSTRALIAN THOROUGHBRED REGISTRATIONS 1973/74-2004/05 (FIGURES FOR RACING YEAR)

Season	Total Registrations	Season	Total Registrations
1973/1974	9377	1989/1990	16918
1974/1975	10561	1990/1991	15607
1975/1976	11513	1991/1992	16845
1976/1977	12540	1992/1993	15539
1977/1978	13068	1993/1994	15845
1978/1979	15438	1994/1995	14762
1979/1980	18965	1995/1996	14063
1980/1981	18881	1996/1997	14772
1981/1982	16237	1997/1998	13847
1982/1983	16505	1998/1999	14177
1983/1984	17655	1999/2000	14445
1984/1985	17593	2000/2001	14613
1985/1986	18851	2001/2002	14150
1986/1987	18939	2002/2003	14330
1987/1988	18439	2003/2004	13585
1988/1989	18147	2004/05	14018



TABLE 32. REGISTRATIONS BY STATE 1999/00-2004/05

SEASON	NSW	VIC	QLD	WA	SA	NT	TAS	ACT
1999/2000	5050	3365	2746	1461	892	65	347	98
2000/2001	5180	3415	2752	1437	970	59	336	96
2001/2002	4827	3340	2683	1520	949	52	335	91
2002/2003	4899	3364	2755	1463	973	60	369	91
2003/2004	4578	3382	2557	1411	906	57	326	102
2004/2005	4624	3570	2703	1424	875	47	358	88

TABLE 33. NUMBER OF OWNERS PER HORSE 1999/00-2004/05 NUMBER OF OWNERS

SEASON	ONE	TWO	THREE	FOUR	FIVE	SIX	SEVEN	EIGHT	NINE	TEN +
1999/2000	5832	4523	1181	1048	491	549	198	201	113	230
2000/2001	5959	4530	1216	1041	474	509	210	194	160	280
2001/2002	5600	4396	1195	1091	517	449	213	203	174	301
2002/2003	5807	4147	1216	1050	529	447	266	251	203	416
2003/2004	5324	3898	1037	1003	508	492	298	292	235	499
2004/2005	5379	4034	1102	953	524	514	366	288	253	599

TABLE 34. OTHER FORMS OF OWNERSHIP 1999/00 - 2004/05

SEASON	TRANSFERS	LEASES	SYNDICATES
1999/2000	7448	4008	197
2000/2001	7032	4178	317
2001/2002	6809	3940	255
2002/2003	5713	3152	349
2003/2004	5741	2600	444
2004/2005	6918	3391	624

Source: Registrar of Racehorses

TABLE 35. REGISTRATIONS BY SEX 1999/00-2004/05

SEASON	MALE	FEMALE
1999/2000	7060	7385
2000/2001	7172	7441
2001/2002	7027	7123
2002/2003	7113	7217
2003/2004	6765	6820
2004/2005	7065	6953

TABLE 36. REGISTRATIONS IN AUSTRALIA BY COUNTRY OF BIRTH 1999/00-2004/05

SEASON	AUS	NZ	USA	OTHER
1999/2000	13263	950	128	104
2000/2001	13549	835	123	106
2001/2002	13313	771	37	29
2002/2003	13562	729	13	26
2003/2004	12862	684	21	15
2004/2005	13224	749	19	22

TABLE 37. REGISTRATIONS BY AGE 1999/00-2004/05

SEASON	YEARLING	2YO	3YO	4YO	5YO	6YO	7YO
1999/2000	2699	8315	2284	602	218	100	218
2000/2001	2791	8430	2266	585	180	112	209
2001/2002	2839	8072	2324	549	190	58	91
2002/2003	2781	8136	2448	619	191	50	68
2003/2004	2623	7705	2413	566	166	49	62
2004/2005	2428	7950	2604	672	201	61	83

TABLE 38. TWO YEAR OLD REGISTRATIONS 1999/00-2004/05

YEAR OF FOALING	FOALS	SEASON OF REGISTRATION	HORSES REGISTERED	% OF FOALS REGISTERED
1997	18416	1999 - 2000	8,317	45%
1998	18355	2000 - 2001	7,967	43%
1999	18548	2001 - 2002	8,079	44%
2000	18658	2002 - 2003	8,138	44%
2001	18198	2003 - 2004	7,706	42%
2002	18216	2004 - 2005	7,950	44%

# LEADING SIRES 2004/05

TABLE 39. LEADING AUSTRALIAN SIRES BY PRIZEMONEY 2004/05

	Stallion	Rnrs	Wnrs Total	Wnrs Stakes	Wins Total	Wins Stakes	Prizemoney
1	Danehill (USA)	219	110	21	188	36	\$11,463,445
2	Zabeel (NZ)	233	111	18	199	22	\$10,309,100
3	Redoute's Choice	127	65	15	103	24	\$7,875,663
4	Encosta de Lago	250	110	6	213	13	\$7,547,765
5	Desert King (IRE)	132	55	3	85	5	\$7,297,875
6	Flying Spur	267	127	11	212	17	\$5,684,973
7	Hennessy (USA)	140	78	4	137	9	\$4,392,353
8	Rubiton	147	61	4	108	6	\$3,943,447
9	Snippets	195	87	6	164	10	\$3,646,028
10	Danzero	181	65	5	117	9	\$3,176,537
11	Red Ransom (USA)	98	46	4	74	5	\$2,996,048
12	Octagonal (NZ)	186	91	4	165	6	\$2,930,152
13	Jeune (GB)	168	83	5	141	6	\$2,886,981
14	Danewin	93	51	3	86	3	\$2,843,195
15	Lion Hunter	222	99	1	157	1	\$2,773,245
16	Timber Country (USA)	75	28	2	53	4	\$2,639,670
17	Secret Savings (USA)	151	65	2	101	3	\$2,639,520
18	Desert Sun (GB)	145	53	3	88	4	\$2,577,718
19	Danehill Dancer (IRE)	178	72	4	115	5	\$2,494,051
20	Archway (IRE)	105	47	6	77	7	\$2,472,715

Source: Australian Bloodhorse Review



TASMANIAN TURF CLUB

TABLE 40. LEADING AUSTRALIAN FIRST CROP SIRES BY PRIZEMONEY 2004/05

	Stallion	Rnrs	Wnrs Total	Wnrs Stakes	Wins Total	Wins Stakes	Prizemoney
1	More Then Ready (USA)	33	16	6	36	7	\$1,473,580
2	Iglesia	32	7	4	16	5	\$995,900
3	Over	13	4	0	5	0	\$753,925
4	Testa Rossa	34	14	3	14	3	\$629,440
5	Fusaichi Pegasus (USA)	37	10	1	14	1	\$506,580
6	Singspiel (IRE)	13	6	0	7	0	\$451,750
7	Happy Giggle	26	6	0	9	0	\$235,585
8	Genuine (JPN)	11	3	0	6	0	\$225,550
9	Monashee Mountain (USA)	24	8	0	11	0	\$205,425
10	Easy Rocking	28	10	0	11	0	\$190,480
11	King's Best (USA)	24	3	0	3	0	\$176,410
12	High Yield (USA)	26	9	0	9	0	\$144,290
13	Mujahid (USA)	15	8	0	10	0	\$117,980
14	Align	9	3	0	5	0	\$110,170
15	Lord Dane	5	1	1	2	2	\$105,850
16	Agnes World (USA)	11	3	0	4	0	\$99,350
17	Dane Supreme	12	3	0	6	0	\$92,550
18	Blackfriars	10	1	1	2	2	\$83,447
19	Montjeu (IRE)	13	3	0	4	0	\$80,675
20	Hayil (USA)	21	5	0	6	0	\$80,100

TABLE 41. LEADING AUSTRALIAN SIRES - BROODMARE SIRES BY PRIZEMONEY - 2004/05

	Stallion	Rnrs	Wnrs Total	Wnrs Stakes	Wins Total	Wins Stakes	Prizemoney
1	Marscay	275	115	7	186	12	\$9,269,381
2	Centaine	220	106	9	181	17	\$5,743,378
3	Marauding (NZ)	225	105	5	191	11	\$5,404,347
4	Riverman (USA)	15	5	1	11	3	\$5,315,477
5	Danehill (USA)	207	102	7	179	9	\$4,860,418
6	Sir Tristram (IRE)	324	126	5	205	9	\$4,790,126
7	Success Express (USA)	80	37	4	75	5	\$4,690,203
8	At Talaq (USA)	206	81	9	152	14	\$4,643,018
9	Luskin Star	267	113	2	193	3	\$4,582,357
10	Don't Say Halo (USA)	163	69	5	111	9	\$4,362,700
11	Last Tycoon (IRE)	176	85	6	134	7	\$3,980,900
12	Bletchingly	214	105	5	174	8	\$3,666,647
13	Snippets	189	83	8	137	11	\$3,420,606
14	Bluebird (USA)	139	76	4	135	5	\$3,199,614
15	Twig Moss (FR)	249	103	4	181	5	\$3,187,901
16	Rory's Jester	263	105	6	158	6	\$3,147,621
17	Palace Music (USA)	196	86	5	143	5	\$2,827,907
18	Canny Lad	126	55	3	88	3	\$2,750,440
19	Rancho Ruler	107	50	4	99	8	\$2,639,631
20	Century	177	73	5	124	8	\$2,539,282

Source: Australian Bloodhorse Review



# LEADING SIRES 2004/05

TABLE 42. LEADING AUSTRALIAN SIRES - TWO YEAR OLDS BY PRIZEMONEY - 2004/05

	Stallion	Rnrs	Wnrs Total	Wnrs Stakes	Wins Total	Wins Stakes	Prizemoney
1	Redoute's Choice	57	23	10	35	16	\$5,943,983
2	More Than Ready (USA)	33	16	6	26	7	\$1,473,580
3	Danehill (USA)	45	20	6	23	7	\$1,166,770
4	Lion Hunter	57	20	1	29	1	\$1,142,620
5	Encosta de Lago	57	14	0	18	0	\$1,035,180
6	Iglesia	32	7	4	16	5	\$995,900
7	Gilded Time (USA)	17	7	1	9	2	\$847,570
8	Over	13	4	0	5	0	\$753,925
9	Testa Rossa	34	14	3	14	3	\$629,440
10	Rory's Jester	26	9	1	9	1	\$548,540
11	Fusaichi Pegasus (USA)	37	10	1	14	1	\$506,580
12	Snippets	38	13	3	18	5	\$494,100
13	Red Ransom (USA)	19	3	1	4	1	\$471,685
14	Singspiel (IRE)	13	6	0	7	0	\$451,750
15	Commands	47	13	1	16	1	\$447,610
16	Dangerous	23	3	1	5	2	\$391,320
17	Xaar (GB)	25	7	1	12	1	\$375,215
18	Catbird	45	14	0	17	0	\$345,047
19	Flying Spur	49	12	0	16	0	\$343,680
20	Anabaa (USA)	11	3	1	7	2	\$340,830

Source: Australian Bloodhorse Review

TABLE 43. LEADING AUSTRALIAN SIRES - THREE YEAR OLDS BY PRIZEMONEY - 2004/05

	Stallion	Rnrs	Wnrs Total	Wnrs Stakes	Wins Total	Wins Stakes	Prizemoney
1	Danehill (USA)	73	42	11	86	20	\$5,648,387
2	Zabeel (NZ)	74	36	5	62	7	\$4,835,735
3	Encosta de Lago	62	33	3	65	9	\$3,528,585
4	Flying Spur	99	56	7	95	10	\$2,996,665
5	Timber Country (USA)	19	7	1	12	2	\$1,971,155
6	Redoute's Choice	70	42	5	68	8	\$1,931,680
7	Red Ransom (USA)	43	20	1	34	2	\$1,846,963
8	Taysasu Tsuyoshi (JPN)	27	9	1	17	5	\$1,608,872
9	Laranto	6	2	1	11	5	\$1,495,141
10	Stravinsky (USA)	40	27	3	45	6	\$1,494,630
11	Danzero	60	26	3	42	6	\$1,495,141
12	Snippets	69	35	1	62	1	\$1,437,090
13	Commands	69	40	0	65	0	\$1,358,852
14	General Nediym	45	26	0	41	0	\$1,356,772
15	Catbird	71	38	1	59	1	\$1,317,077
16	Distorted Humor (USA)	42	20	1	34	1	\$1,238,820
17	Metal Storm (FR)	58	33	1	57	4	\$1,215,360
18	Pins	23	14	2	22	2	\$1,210,515
19	Canny Lad	83	37	1	55	2	\$1,164,932
20	Danehill Dancer (IRE)	65	24	1	36	2	\$1,055,390

Source: Australian Bloodhorse Review

TABLE 44. AUSTRALIAN SIRES BY SERVICE FEE 2004/05

	Stallion	Service Fee (AUD)	Mares Served	Stud	State Standing
1	Encosta De Lago	FOA	208	Coolmore	NSW
2	Rock of Gibraltar (IRE)	\$93,500	144	Coolmore	NSW
3	Fusaichi Pegasus (USA)	\$77,000	153	Coomore	NSW
4	Giant's Causeway (USA)	\$77,000	147	Coolmore	NSW
5	Red Ransom (USA)	\$66,000	127	Vinery	NSW
6	Lonhro	\$60,000	129	Woodlands	NSW
7	Elusive Quality (USA)	\$55,000	87	Darley	NSW
8	Exceed And Excel	\$55,000	143	Darley	NSW
9	Dehere	\$45,000	56	Arrowfield	NSW
10	Falbrav (IRE)	\$40,000	98	Arrowfield	NSW
11	Redoute's Choice	\$40,000	213	Arrowfield	NSW
12	Anabaa (USA)	\$38,500	102	Widden	NSW
13	Danehill Dancer (IRE)	\$35,750	140	Coolmore	NSW
14	Galileo (IRE)	\$35,750	137	Coolmore	NSW
15	French Deputy (USA)	\$35,000	54	Arrowfield	NSW
16	Carnegie (IRE)	\$33,000	127	Darley	NSW
17	Fasliyev (USA)	\$33,000	113	Coolmore	VIC
18	Flying Spur	\$33,000	141	Arrowfield	NSW
19	Reset	\$33,000	146	Darley	NSW
20	Secret Savings	\$33,000	73	Emirates Park	NSW

Source : Stallions 2004

TABLE 45. AUSTRALIAN SIRES BY MARES SERVED 2004/05

	Stallion	Mares Served	Advertised Service Fee (AUD)	Stud	State Standing
1	Redoute's Choice	213	\$40,000	Arrowfield	NSW
2	Encosta De Lago	208	FOA	Coolmore	NSW
3	Untouchable	192	\$7,700	Darley	NSW
4	Bianconi (USA)	189	\$7,700	Collingrove	VIC
5	Iglesia	185	\$6,000	Oaklands	QLD
6	Sequalo	179	\$6,600	Lyndhurst	QLD
7	Shrewdy	179	\$5,500	Foxes Hollow	NSW
8	Choisir	176	\$30,250	Coolmore	NSW
9	General Nediym	171	\$30,800	Widden	NSW
10	Danzero	166	\$25,000	Arrowfield	NSW
11	Show A Heart	159	\$13,750	Glenlogan	QLD
12	Fusaichi Pegasus (USA)	153	\$77,000	Coolmore	NSW
13	Bel Esprit	152	\$18,150	Eliza Park	VIC
14	Catbird	152	\$16,500	Yarraman Park	NSW
15	Tale Of The Cat (USA)	150	\$30,250	Coolmore	NSW
16	Testa Rossa	150	\$22,000	Yallambee	VIC
17	King Of Danes	150	\$7,700	Glenlogan	QLD
18	Delago Brom	149	\$8,800	Eliza Park	VIC
19	Giant's Causeway (USA)	147	\$77,000	Coolmore	NSW
20	Monashee Mountain (USA)	247	\$7,150	Willowbend	QLD

\* All Service Fees include GST

FOA: Fee On Application

Source: Australian Stud Book

# SALES



REDOUTE'S CHOICE – TUGELA COLT AT INGLIS NEWMARKET

LOT 259  258 \$100,000  
As 2,500,000 257 \$75,000  
US\$ 1,931,300 256 \$130,000  
PI \$50,000

## KEY FACTS

- A new Australian record for a yearling was set again this year. A Redoute's Choice-Tugela colt consigned by Arrowfield Stud as agent was sold to Woodlands Stud for \$2,500,000.
- A new record number of yearlings auctioned was also set this year with 4,837 yearlings going under the hammer for a record gross of \$252,646,928 (an increase of 14.3% on the previous year.)
- The yearling sale market experienced record growth this year with the average sale price rising between 7% and 24% at all major sales.
- A new Australian record for a broodmare was also set this year. Mannington (Danehill-Bint Marscay by Marscay) was included in the Vinery Stud Dispersal at the Australian Select Broodmare Sale and sold to Darley Australia for \$2,050,000. The average sale price for broodmares increased by a massive 73.5%



# AUSTRALIAN BLOODSTOCK SALES

TABLE 46. AUSTRALIAN AUCTION SALES RESULTS 2004/05

CATEGORY	NO. SOLD	GROSS SALES	AVERAGE
Weanlings	1053	\$16,859,955	\$16,011
Yearlings	4837	\$252,646,928	\$52,232
2 Year Olds	471	\$9,638,450	\$20,464
Broodmares	2,200	\$89,262,075	\$40,574

Source: The Australian Bloodhorse Review

TABLE 47. MAJOR SALES RESULTS 2004/2005

Sale	Sale Gross	% Change	Sale Mean	% Change	Top Price	Category	Breeding
Inglis Australian Easter Yearling	\$90,528,000	+ 19.5%	\$207,633	+ 1.4%	\$2,500,000	Yearling	BR C 13/9/2003 Redoute's Choice - Tugela (USA)
Magic Millions Gold Coast	\$65,432,000	+ 5.4%	\$117,262	+ 6.5%	\$1,050,000	Yearling	B C 16/8/2003 Danehill (USA) - Silken Whisper (USA)
Inglis Australian Broodmare	\$49,344,550	+ 158.1%	\$79,975	+ 94.5%	\$700,000	Broodmare	MANNINGTON Danehill (USA) - Bint Marscay
Magic Millions Broodmare	\$35,065,700	+ 65.2%	\$50,820	+ 23.6%	\$810,000	Broodmare	REGIMENTAL GAL General Nediym - Hallaya
Inglis Melbourne Premier	\$23,401,000	+ 28.1%	\$52,118	+ 7.0%	\$320,000	Yearling	BC C 19/10/2003 Encosta de Lago - Classic Plume (NZ)
Magic Millions Adelaide	\$16,681,000	+ 18.3%	\$33,836	- 14.8%	\$255,000	Yearling	CH C 9/9/2003 Fusaichi Pegasus (USA) - So Gorgous
Inglis Australian Select Weanling	\$2,753,850	- 27.5%	\$15,471	- 36.5%	\$200,000	Weanling	B/BR F 20/9/2003 Rock Of Gibraltar (IRE) - Enlightenment (USA)

Source: The Australian Bloodhorse Review

# RESULTS

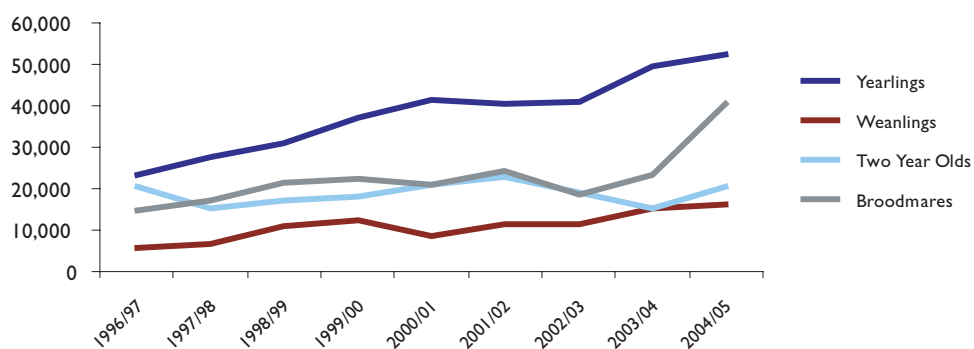
TABLE 48. YEARLING SALES RESULTS 1996/97-2004/05

Year	No. Sold	% Change	Average (\$)	% Change	Gross (\$)	% Change	Median (\$)	% Change
1996/97	4,181	-	\$23,294	-	\$97,395,600	-	\$10,000	-
1997/98	4,188	0.2%	\$27,678	18.8%	\$115,915,650	19.0%	\$12,000	20.0%
1998/99	4,194	0.1%	\$30,816	11.3%	\$129,242,000	11.5%	\$12,000	0.0%
1999/00	4,378	4.4%	\$37,162	20.6%	\$162,695,550	25.9%	\$16,000	33.3%
2000/01	4,222	-3.6%	\$41,267	11.0%	\$174,230,150	7.1%	\$18,000	12.5%
2001/02	4,167	-1.3%	\$40,574	-1.7%	\$169,033,205	-3.0%	\$18,000	0.0%
2002/03	4,057	-2.6%	\$41,048	1.2%	\$166,531,465	-1.5%	\$20,000	11.1%
2003/04	4,455	9.8%	\$49,612	20.9%	\$221,019,673	32.7%	\$22,500	12.5%
2004/05	4,837	8.6%	\$52,232	5.3%	\$252,646,928	14.3%	\$22,000	-2.2%

TABLE 49. WEANLING SALES RESULTS 1996/97-2004/05

Year	No. Sold	% Change	Average (\$)	% Change	Gross (\$)	% Change	Median (\$)	% Change
1996/97	718	-	\$5,762	-	\$4,136,900	-	\$2,325	-
1997/98	571	-20.5%	\$6,490	12.6%	\$3,744,850	-9.5%	\$2,250	-3.2%
1998/99	569	-0.4%	\$11,003	69.5%	\$6,260,750	67.2%	\$5,000	122.2%
1999/00	826	45.2%	\$12,345	12.2%	\$10,197,050	62.9%	\$4,625	-7.5%
2000/01	744	-9.9%	\$8,560	-30.7%	\$6,368,500	-37.5%	\$3,500	-24.3%
2001/02	902	21.2%	\$11,379	32.9%	\$10,263,470	61.2%	\$4,500	28.6%
2002/03	866	-4.0%	\$11,435	0.5%	\$9,903,100	-3.5%	\$4,560	1.3%
2003/04	846	-2.3%	\$15,051	31.6%	\$12,732,800	28.6%	\$6,450	41.4%
2004/05	1053	24.5%	\$16,011	6.4%	\$16,859,955	32.4%	\$6,500	0.8%

CHART 6. AUSTRALIAN BLOODSTOCK AUCTION RESULTS - AVERAGE PRICES 1996/97 - 2004/05



Source: Australian Bloodhorse Review

# AUSTRALIAN BLOODSTOCK

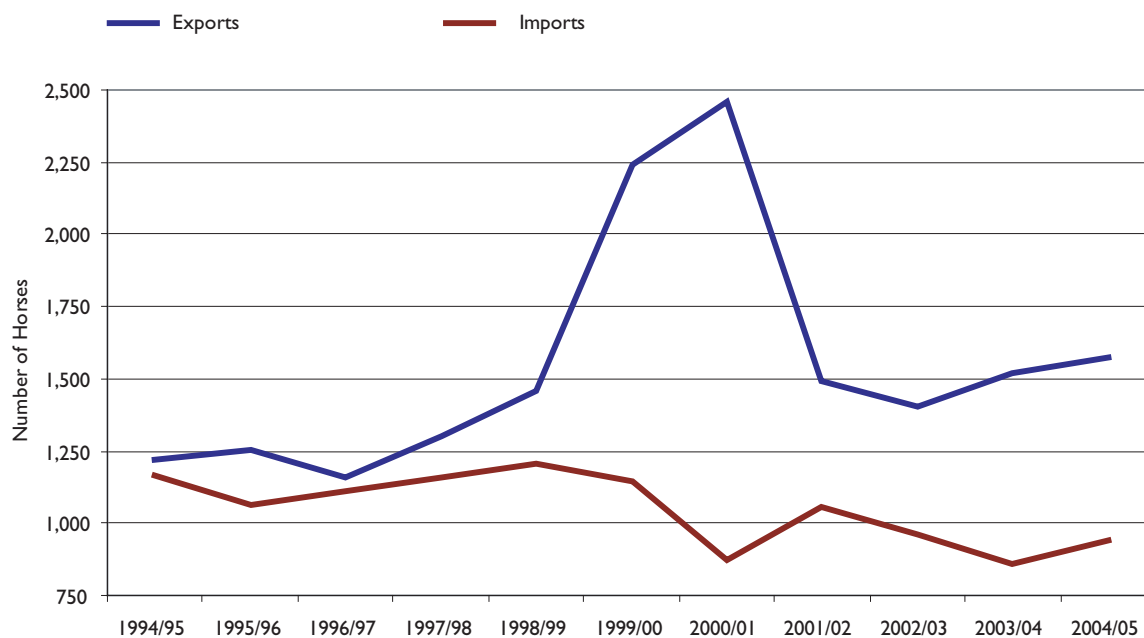
TABLE 50. EXPORTED AND IMPORTED BLOODSTOCK 1994/95-2004/05

	1994/95	1995/96	1996/97	1997/98	1998/99	1999/00	2000/01	2001/02	2002/03	2003/04	2004/05	Total
Exports	1223	1254	1157	1301	1461	2238	2460	1495	1401	1517	1573	17080
Imports	1163	1066	1111	1158	1205	1145	870	1054	959	860	939	11530

Note: These figures only include permanently imported and exported bloodstock

Source: Australian Stud Book

CHART 7. EXPORTED AND IMPORTED BLOODSTOCK 1994/95-2004/05



# IMPORTS & EXPORTS

TABLE 51. AUSTRALIAN THOROUGHBRED EXPORTS BY COUNTRY 1994/95 - 2004/05

COUNTRY													% of Total Exports	
EXPORTED TO	1994/95	1995/96	1996/97	1997/98	1998/99	1999/00	2000/01	2001/02	2002/03	2003/04	2004/05	Total	Since 1994/95	
NEW ZEALAND	289	235	243	333	436	438	497	512	507	475	557	4522	28.4%	
SINGAPORE	396	393	375	171	166	336	363	183	176	145	145	2849	17.9%	
KOREA	259	263	227	84	110	151	127	39	5	54	115	1434	9.0%	
MALAYSIA	INCLUDED IN SINGAPORE			130	77	296	298	214	257	194	148	1614	10.1%	
HONG KONG	135	111	95	104	110	141	197	144	135	140	121	1433	9.0%	
MACAU	49	99	96	114	134	113	150	171	117	141	155	1339	8.4%	
CHINA	0	0	0	242	288	195	244	101	0	78	18	1166	7.3%	
THAILAND	46	46	10	35	21	0	8	6	46	29	26	273	1.7%	
SOUTH AFRICA	4	36	24	38	10	87	19	5	34	59	60	376	2.4%	
PHILIPPINES	1	18	22	5	0	0	15	63	46	72	101	343	2.2%	
USA	10	2	6	8	21	17	30	23	35	42	33	227	1.4%	
INDONESIA	11	32	3	0	0	0	0	0	0	0	0	46	0.3%	
JAPAN	8	1	12	7	7	6	23	13	17	34	33	161	1.0%	
IRELAND	0	2	1	2	3	2	21	7	9	26	25	98	0.6%	
UNITED ARAB EMIRATES	3	2	0	0	0	1	25	10	3	7	6	57	0.4%	
GREAT BRITAIN	1	1	1	1	1	2	9	4	4	17	19	60	0.4%	
INDIA	2	3	6	3	9	0	2	0	0	0	0	25	0.2%	
SAUDI ARABIA	2	0	8	11	0	0	0	0	0	4	0	25	0.2%	
OTHER *	7	10	28	13	68	97	29	0	10	0	11	273	1.7%	
<b>TOTAL EXPORTS</b>	<b>1223</b>	<b>1254</b>	<b>1157</b>	<b>1301</b>	<b>1461</b>	<b>1882</b>	<b>2057</b>	<b>1495</b>	<b>1401</b>	<b>1517</b>	<b>1573</b>	<b>16321</b>	<b>100.0%</b>	

\*Other includes France, Italy, Kuwait, New Caledonia, Pakistan, Qatar

TABLE 52. AUSTRALIAN THOROUGHBRED IMPORTS BY COUNTRY 1994/95 - 2004/05

COUNTRY													% of Total Imports	
OF ORIGIN	1994/95	1995/96	1996/97	1997/98	1998/99	1999/00	2000/01	2001/02	2002/03	2003/04	2004/05	Total	Since 1994/95	
NEW ZEALAND	1006	912	929	905	981	884	694	857	742	665	742	9317	68.8%	
U.S.A.	62	71	104	152	137	130	95	117	106	101	1159	2234	16.5%	
IRELAND	24	41	36	42	38	58	38	41	57	49	473	897	6.6%	
GREAT BRITAIN	23	27	24	45	28	48	31	26	36	23	351	662	4.9%	
OTHER	45	0	2	1	5	8	3	4	11	7	105	191	1.4%	
CANADA	0	10	12	8	13	5	6	1	2	3	60	120	0.9%	
FRANCE	3	5	4	5	3	12	3	7	5	11	65	123	0.9%	
GERMANY	0	0	0	0	0	0	0	1	0	1	2	4	0.0%	
<b>TOTAL IMPORTS</b>	<b>1163</b>	<b>1066</b>	<b>1111</b>	<b>1158</b>	<b>1205</b>	<b>1145</b>	<b>870</b>	<b>1054</b>	<b>959</b>	<b>860</b>	<b>2957</b>	<b>13548</b>	<b>100.0%</b>	

\*Other includes Japan, South Africa, Italy, Kuwait, New Caledonia, Pakistan, Qatar, South America

Source: Australian Stud Book





## KEY FACTS

- There was a slight decrease in the number of races run for the 2004/05 racing season.
- Despite the reduction in races, prizemoney increased by over 5%

TASMANIAN RACE DAY



# INDUSTRY TRENDS



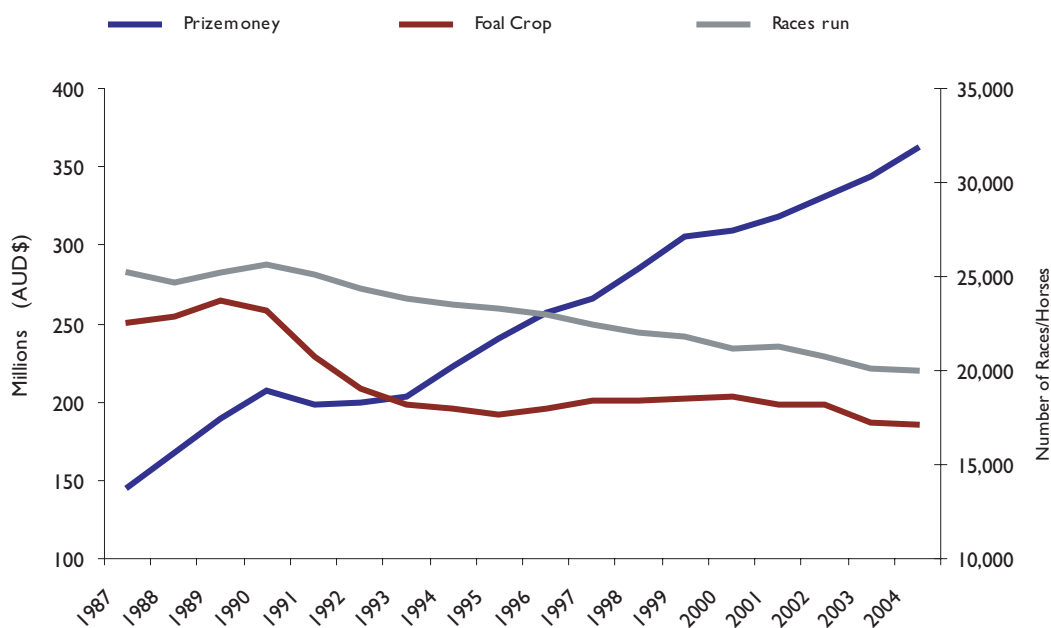
# INDUSTRY TRENDS

TABLE 53. RACES, PRIZEMONEY AND FOAL CROPS 1987/88-2004/05

Season	Foal Crop	% Change	Races	% Change	Prizemoney	% Change
1987/88	22,587	-	25,163	-	\$146,093,956	-
1988/89	22,921	1.48%	24,699	-1.84%	\$167,332,361	14.54%
1989/90	23,697	3.39%	25,214	2.09%	\$189,959,689	13.52%
1990/91	23,195	-2.12%	25,614	1.59%	\$206,941,856	8.94%
1991/92	20,780	-10.41%	25,062	-2.16%	\$198,881,972	-3.89%
1992/93	19,080	-8.18%	24,390	-2.68%	\$198,974,835	0.05%
1993/94	18,207	-4.58%	23,840	-2.26%	\$202,998,634	2.02%
1994/95	17,972	-1.29%	23,503	-1.41%	\$222,539,649	9.63%
1995/96	17,678	-1.64%	23,280	-0.95%	\$239,972,381	7.83%
1996/97	18,006	1.86%	22,935	-1.48%	\$256,430,123	6.86%
1997/98	18,416	2.28%	22,498	-1.91%	\$265,459,673	3.52%
1998/99	18,355	-0.33%	22,018	-2.13%	\$284,811,671	7.29%
1999/00	18,548	1.05%	21,764	-1.15%	\$305,235,336	7.17%
2000/01	18,658	0.59%	21,190	-2.64%	\$308,792,081	1.17%
2001/02	18,198	-2.47%	21,324	0.63%	\$318,150,688	3.03%
2002/03	18,216	0.10%	20,702	-2.92%	\$331,472,666	4.19%
2003/04	17,236	-5.38%	20,072	-3.04%	\$344,183,985	3.83%
2004/05*	17,178	-0.34%	19,968	-0.52%	\$361,999,169	5.18%

\* This figure is subject to an increase due to Late Foal Returns

CHART 8. RACES, PRIZEMONEY AND FOAL CROPS 1987/88-2004/05



# PRIZEMONEY TRENDS

TABLE 54 . STAKES & STANDARD RACE PRIZEMONEY 1994/95 – 2004/05

Year	Stakes Race Prize-money	% Change	Standard Race Prizemoney	% Change	Total Prize-money	% Change
1994/95	\$59,266,405	-	\$163,273,244	-	\$222,539,649	-
1995/96	\$64,119,891	8.19%	\$175,852,490	7.70%	\$239,972,381	7.83%
1996/97	\$68,365,441	6.62%	\$188,064,682	6.94%	\$256,430,123	6.86%
1997/98	\$73,192,449	7.06%	\$192,267,224	2.23%	\$265,459,673	3.52%
1998/99	\$80,302,105	9.71%	\$204,509,566	6.37%	\$284,811,671	7.29%
1999/00	\$89,148,035	11.02%	\$216,087,301	5.66%	\$305,235,336	7.17%
2000/01	\$88,461,650	-0.77%	\$220,330,431	1.96%	\$308,792,081	1.17%
2001/02	\$96,166,080	8.71%	\$221,984,608	0.75%	\$318,150,688	3.03%
2002/03	\$100,962,330	4.99%	\$230,510,336	3.84%	\$331,472,666	4.19%
2003/04	\$102,155,473	1.18%	\$242,028,512	5.00%	\$344,183,985	3.83%
2004/05	\$104,328,071	2.13%	\$257,671,098	6.46%	\$361,999,169	5.18%

CHART 9. STAKES & STANDARD RACE PRIZEMONEY 1994/95 – 2004/05

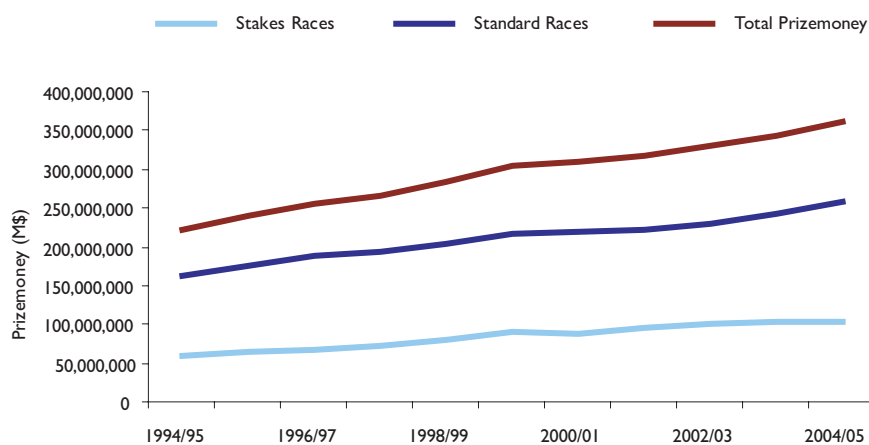


TABLE 55. PRIZEMONEY EARNED BY EACH INDIVIDUAL STARTER 1994/95 – 2004/05

YEAR	0\$	\$1 - \$9,999	\$10,000-\$99,999	\$100,000-\$499,000	\$500,000 +	TOTAL
1994/95	10868	18843	4633	177	19	34540
1995/96	10235	18116	4965	213	22	33551
1996/97	9555	17310	5427	220	29	32541
1997/98	9481	16722	5548	245	24	32020
1998/99	9530	16313	5902	264	30	32039
1999/00	9487	15914	6221	291	38	31951
2000/01	9646	15429	6194	330	38	31637
2001/02	9945	15006	6378	333	40	31702
2002/03	10127	14453	6631	386	42	31639
2003/04	9782	14109	6786	411	38	31126
2004/05	9763	13715	7052	466	41	31037

# RACING TRENDS

TABLE 56. METROPOLITAN & COUNTRY RACE TRENDS 1994/95 – 2004/05

Year	Meetings	% Change	Metro Races	% Change	Country Races	% Change	Total Races	% Change
1994/95	3386	-	4898	-	18605	-	23503	-
1995/96	3335	-1.51%	4915	0.35%	18365	-1.29%	23280	-0.95%
1996/97	3274	-1.83%	4830	-1.73%	18105	-1.42%	22935	-1.48%
1997/98	3203	-2.17%	4957	2.63%	17541	-3.12%	22498	-1.91%
1998/99	3110	-2.90%	5056	2.00%	16962	-3.30%	22018	-2.13%
1999/00	3050	-1.93%	5070	0.28%	16694	-1.58%	21764	-1.15%
2000/01	2964	-2.82%	4966	-2.05%	16224	-2.82%	21190	-2.64%
2001/02	2990	0.88%	4966	0.00%	16328	0.64%	21324	0.63%
2002/03	2907	-2.78%	4653	-6.30%	16049	-1.71%	20702	-2.92%
2003/04	2777	-4.47%	4749	2.06%	15323	-4.52%	20072	-3.04%
2004/05	2745	-1.15%	4742	-0.15%	15226	-0.63%	19968	-0.52%

TABLE 57. NUMBER OF RACE MEETINGS BY STATE 1998/99 – 2004/05

Year	VIC	NSW	QLD	SA	WA	TAS	NT	ACT	AUSTRALIA
1998/99	572	864	989	192	297	79	92	25	3110
1999/00	578	877	927	189	299	77	78	25	3050
2000/01	581	845	909	184	286	79	80	25	2989
2001/02	578	847	906	186	297	75	79	22	2990
2002/03	577	814	853	191	292	75	81	24	2907
2003/04	572	813	738	186	293	76	77	22	2777
2004/05	572	782	741	181	297	77	75	20	2745

TABLE 58. NUMBER OF RACES BY STATE 1998/99 – 2004/05

Year	VIC	NSW	QLD	SA	WA	TAS	NT	ACT	AUSTRALIA
1998/99	4567	6190	6369	1464	2169	618	460	181	22018
1999/00	4626	6161	6147	1437	2198	590	429	176	21764
2000/01	4694	5705	6056	1415	2084	606	430	200	21190
2001/02	4655	5855	5946	1447	2194	597	418	202	21314
2002/03	4677	5592	5609	1485	2130	605	424	180	20702
2003/04	4623	5682	4950	1471	2151	608	414	173	20072
2004/05	5566	4646	4939	1434	2189	618	416	160	19968

TABLE 59. AGE OF INDIVIDUAL HORSES RACING 1994/95 – 2004/05

Year	2YO	3YO	4YO	5YO	6YO	7YO	8YO +	TOTAL
1994/95	4687	9359	8694	5760	3282	1603	1155	34540
1995/96	4633	8625	8171	5946	3322	1721	1133	33551
1996/97	4631	8503	7500	5481	3485	1719	1222	32541
1997/98	4601	8531	7383	5105	3274	1832	1294	32020
1998/99	4519	8764	7524	5099	2982	1773	1378	32039
1999/00	4262	8996	7612	5127	2988	1580	1386	31951
2000/01	4014	8785	7945	5037	3036	1571	1249	31637
2001/02	3852	8752	7878	5337	3043	1608	1232	31702
2002/03	3939	8579	7897	5259	3160	1599	1206	31639
2003/04	3601	8877	7725	5205	2969	1611	1138	31126
2004/05	3630	8546	8022	5155	3003	1542	1139	31037

TABLE 60. HORSES BY NUMBER OF WINS FOR THE 2004/05 SEASON

WINS	0	1	2	3	4	5	6	7	8	9	10+
NO. OF HORSES	19031	7060	2972	1247	484	161	58	16	7	1	0

# STARTERS TRENDS

TABLE 61. NUMBER OF INDIVIDUAL RUNNERS PER SEASON 1994/95 – 2004/05

YEAR	VIC	NSW	SA	TAS	QLD	WA	NT	AUSTRALIA	DUALS
1994/95	9039	12695	3397	1085	9460	3516	602	39794	5254
1995/96	8865	12164	3322	1055	9186	3545	642	38779	5228
1996/97	9035	11492	3247	1005	8984	3426	577	37766	5225
1997/98	9105	11146	3192	989	8788	3339	558	37117	5097
1998/99	9103	11059	3262	988	8908	3385	513	37218	5179
1999/00	9265	11238	3193	936	8677	3352	542	37203	5251
2000/01	9435	11112	3256	916	8479	3234	561	36993	5356
2001/02	9466	10973	3256	980	8584	3251	541	37051	5349
2002/03	9539	10710	3188	1010	8564	3163	584	36758	5118
2003/04	9245	10750	3281	1008	8255	3234	564	36337	5211
2004/05	9315	10645	3152	1008	8291	3307	538	36256	5219

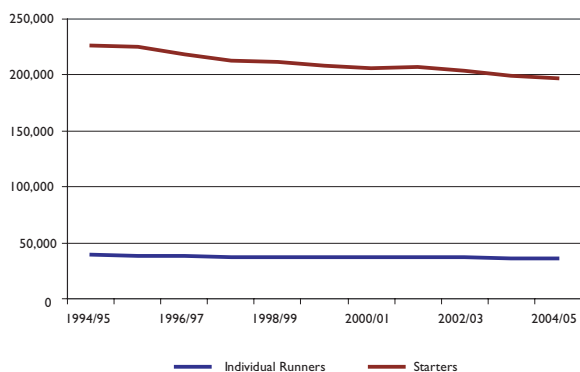
Note: Runners that have raced in more than one state are counted in each state total

TABLE 62. NUMBER OF STARTERS PER SEASON 1994/95 – 2004/05

YEAR	VIC	NSW	SA	TAS	QLD	WA	NT	AUSTRALIA
1994/95	46894	70053	17205	7027	58694	22525	3741	226139
1995/96	48340	67977	16586	7021	57642	23858	3809	225233
1996/97	49689	63534	15779	6550	56594	23183	3530	218859
1997/98	49435	60580	15715	6341	55545	22183	3323	213122
1998/99	48960	60154	15691	6610	54391	22259	3218	211283
1999/00	48743	61183	14800	5903	53058	21931	3009	208627
2000/01	49848	59327	14491	6127	51990	21357	3307	206447
2001/02	48861	59201	15207	6032	52210	22274	3085	206870
2002/03	49144	56773	15176	6371	51534	21170	3143	203311
2003/04	47397	56796	15480	5868	48307	21737	3224	198809
2004/05	47123	55916	14900	6096	47933	21611	3104	196683

Note: NSW figures include the ACT

CHART 10. NUMBER OF INDIVIDUAL RUNNERS & TOTAL STARTERS 1994/95 – 2004/05



## NATIONAL CONTROL OF PROHIBITED SUBSTANCES

- To ensure that its racing is clean and fair, Australian Racing maintains a strict policy on the control of prohibited substances in racehorses.
- During 2004 the four Official Racing Laboratories, in Melbourne, Sydney, Brisbane and Perth analysed some 32,003 that had, under exacting procedure and security processes, been taken for racehorses.

TABLE 63. NATIONAL TESTING FOR PROHIBITED SUBSTANCES 2001 - 2004

YEAR	Total Number of Races	Total Number of Samples	Av. Samples Per Race	Urine Tests		Blood Samples		Positive Cases	% Positive Cases
				Samples	Positive	Samples	Positive		
2001	21,324	31124	1.46	15137	51	15987	10	61	0.20
2002	20,702	27015	1.31	14149	41	12866	13	54	0.20
2003	20,072	30501	1.52	15412	50	15089	14	64	0.21
2004	19,968	32003	1.60	15679	41	16324	10	51	0.16

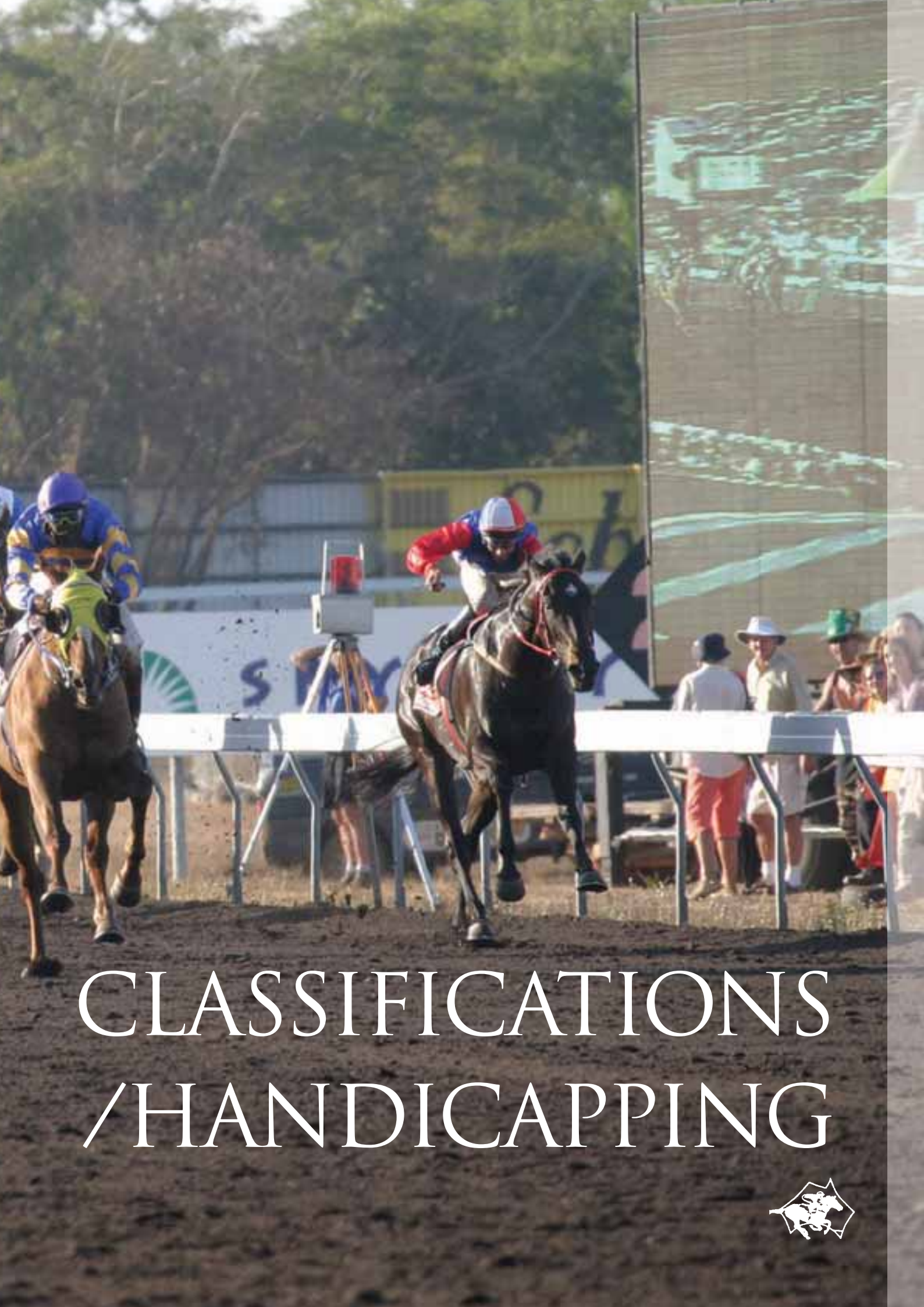
Note: Figures are calculated as per calendar year, excluding the number of races which are calculated per racing season

At the time of printing International statistics were unavailable. International statistics can be sourced through [www.horseracingintfed.com](http://www.horseracingintfed.com)



DARWIN CUP DAY – NORTHERN TERRITORY

COURTESY OF STEPHEN CHERRY PHOTOGRAPHY AND THE DARWIN TURF CLUB©



# CLASSIFICATIONS /HANDICAPPING





# AUSTRALIAN-NEW ZEALAND

– The 2004/05 ratings are the last whereby fillies and mares are rated at the same level as their male competitors. As of the 2005/06 racing season, Australia will adopt the international rating standard whereby fillies and mares weight for age allowance will not be included within the ratings. ie 5 points less.

– The Australia-New Zealand Classifications represents, on an annual basis by way of an agreed criteria, the assessments of the quality performers from the Australasian thoroughbred racing season.

– For consideration a horse must have won or been placed to sixth in a Group event or won a Listed race in Australia, New Zealand or another performance worthy of inclusion.

– The weight allotted each horse represents an assessment for a race within the indicated distance range at the end of the racing season in July.

TABLE 64. CHAMPION RACEHORSES BY RATINGS 1979/80 - 2004/05

Year	Horse	Age/Sex/Wgt	Year	Horse	Age/Sex/Wgt
2004/05	Makybe Diva (GB)	6M - 124	1991/92	Let's Elope (NZ)	4M - 124
2003/04	Lonhro	5H - 120		Super Impose	7G - 124
2002/03	Northerly	6G - 124	1990/91	Better Loosen Up	5G - 128
2001/02	Sunline (NZ)	6M - 124	1989/90	Almaarad (IRE)	7H - 124
2000/01	Sunline (NZ)	5M - 126	1988/89	Beau Zam (NZ)	4H - 122
1999/00	Sunline (NZ)	4M - 124	1987/88	Rubiton	4H - 125
1998/99	Might and Power (NZ)	5G - 128	1986/87	Bonecrusher (NZ)	4G - 125
1997/98	Might and Power (NZ)	4G - 127	1985/86	Bonecrusher (NZ)	3G - 122
1996/96	Saintly (NZ)	4G - 125	1984/85	Red Anchor (NZ)	3C - 121
1995/96	Octagonal (NZ)	3C - 122	1983/84	Emancipation	4M - 123
1994/95	Jeune (GB)	6H - 124	1982/83	Gurner's Lane (NZ)	4G - 124
1993/94	Durbridge	6H - 122	1981/82	Kingston Town	5G - 127
1992/93	Schillaci	4G - 124	1980/81	Kingston Town	4G - 128
			1979/80	Dulcify (NZ)	4G - 126

TABLE 65. AUSTRALIAN TOP RACE CLASSIFICATIONS 2004/2005

Rating	Date	Track	Race Name	Grp	Weight Conds	Dist (M)	Categ.	Winning Horse	Age	Sex
117	19-Mar-05	RHIL	The BMW	1	WFA	2400	L	MAKYBE DIVA (GB)	6	M
116	05-Feb-05	FLEM	Lightning Stakes	1	WFA	1000	S	FASTNET ROCK (AUS)	3	C
115.8	23-Oct-04	MV	WS Cox Plate	1	WFA	2040	I	SAVABEEL (AUS)	3	C
115.5	02-Nov-04	FLEM	Melbourne Cup	1	HCP	3200	E	MAKYBE DIVA (GB)	6	M
115	09-Oct-04	CAUL	Caulfield Stakes	1	WFA	2000	I	MUMMIFY (AUS)	5	G
114.8	12-Feb-05	CAUL	C.F. Orr Stakes	1	WFA	1400	M	ELVESTROEM (AUS)	4	H
114.3	12-Mar-05	FLEM	Australian Cup	1	WFA	2000	I	MAKYBE DIVA (GB)	6	M
113.5	02-Apr-05	RAND	Queen Elizabeth Stakes	1	WFA	2000	I	GRAND ARMEE (AUS)	6	G
113	26-Feb-05	CAUL	St George Stakes	2	WFA	1800	M	ELVESTROEM (AUS)	4	H
112.5	02-Oct-04	FLEM	Turnbull Stakes	2	SWP	2000	I	ELVESTROEM (AUS)	4	H
112.3	26-Mar-05	RAND	T.J. Smith Stakes	1	WFA	1200	S	SHAMEKHA (AUS)	4	M
111.8	25-Sep-04	W FM	George Main Stakes	1	WFA	1600	M	GRAND ARMEE (AUS)	6	G
111.5	12-Mar-05	FLEM	Newmarket Handicap	1	HCP	1200	S	ALINGHI (AUS)	3	F
111	11-Jun-05	E FM	Stradbroke Handicap	1	HCP	1400	M	ST BASIL (AUS)	7	G
110.8	05-Mar-05	RHIL	Ranvet Stakes	1	WFA	2000	I	GRAND ARMEE (AUS)	6	G
110.8	12-Feb-05	RAND	Apollo Stakes	2	WFA	1400	I	GRAND ARMEE (AUS)	6	G
110.5	30-Oct-04	FLEM	Mackinnon Stakes	1	WFA	2000	I	GRAND ARMEE (AUS)	6	G

Note - Race rating derived by averaging the horse rating of the first four placegetters.

# CLASSIFICATIONS

TABLE 66. AUSTRALIAN- NEW ZEALAND CLASSIFICATIONS 2004/05 – TWO YEAR OLDS

Rating	Horse	Age	Sex	Date	Track	Country	Finish	Race	Group	Categ	Dist
106	FASHIONS AFIELD (AUS)	2	F	26-Mar-05	RAND	AUS	1	AJC Sires Produce Stakes	1	M	1400
105	STRATUM (AUS)	2	C	19-Mar-05	RHIL	AUS	1	Golden Slipper Stakes	1	S	1200
103	CARRY ON CUTIE (AUS)	2	F	02-Apr-05	RAND	AUS	1	Champagne Stakes	1	M	1600
103	DARCI BRAHMA (NZ)	2	C	16-Jun-05	E FM	AUS	1	The T.J Smith Stakes	1	M	1600
103	MEDIA (AUS)	2	F	19-Mar-05	RHIL	AUS	3	Golden Slipper Stakes	1	S	1200
103	MNEMOSYNE (AUS)	2	F	26-Mar-05	RAND	AUS	2	AJC Sires Produce Stakes	1	M	1400
102	KINDACROSS (NZ)	2	G	16-Apr-05	AWAP	NZ	1	Manawatu Sires Produce S.	1	M	1400
101	MI JUBILEE (NZ)	2	F	05-Mar-05	ELLS	NZ	1	Ellerslie Sires Produce Stakes	1	S	1200
101	UNDOUBTEDLY (AUS)	2	C	26-Feb-05	CAUL	AUS	1	Blue Diamond Stakes	1	S	1200
101	VIRAGE DE FORTUNE (AUS)	2	F	05-Mar-05	E FM	AUS	1	QTC Sires Produce Stakes	1	M	1400
101	WAHID (NZ)	2	G	16-Apr-05	AWAP	NZ	2	Manawatu Sires Produce S.	1	M	1400
100	SNITZEL (AUS)	2	C	26-Feb-05	CANT	AUS	1	Skyline Stakes	3	S	1200

TABLE 67. AUSTRALIAN-NEW ZEALAND CLASSIFICATIONS 2004/05 – THREE YEAR OLDS

Rating	Horse	Age	Sex	Date	Track	Country	Finish	Race	Group	Categ	Dist
118	ALINGHI (AUS)	3	F	12-Mar-05	FLEM	AUS	1	Newmarket Handicap	1	S	1200
118	FASTNET ROCK (AUS)	3	C	05-Feb-05	FLEM	AUS	1	Lightning Stakes	1	S	1000
118	SAVABEEL (AUS)	3	C	23-Oct-04	MV	AUS	1	WS Cox Plate	1	I	2040
114	PLASTERED (AUS)	3	G	30-Oct-03	FLEM	AUS	1	Victoria Derby	1	L	2500
113	EREMAIN (AUS)	3	G	26-Mar-05	RAND	AUS	1	AJC Australian Derby	1	L	2400
112	XCELLENT (NZ)	3	G	05-Mar-05	ELLS	NZ	1	New Zealand Stakes	1	I	2000
111	CHARGE FORWARD (AUS)	3	C	30-Mar-05	RAND	AUS	1	The Galaxy	1	S	1100
111	COUNT RICARDO (AUS)	3	G	13-Nov-04	SANH	AUS	1	Sandown Classic	2	L	2400
111	RAILINGS (AUS)	3	G	26-Mar-05	RAND	AUS	3	AJC Australian Derby	1	L	2400
111	STELLA GRANDE (AUS)	3	G	26-Mar-05	RAND	AUS	2	AJC Australian Derby	1	L	2400
110	AL MAHER (AUS)	3	C	12-Mar-05	FLEM	AUS	1	Australian Guineas	1	M	1600
110	DANCE HERO (AUS)	3	G	05-Mar-05	RHIL	AUS	1	Canterbury Stakes	2	S	1300
110	DIZELLE (AUS)	3	F	30-Mar-05	RAND	AUS	1	AJC Australian Oaks	1	L	2400
110	OUTBACK PRINCE (AUS)	3	C	19-Mar-05	RHIL	AUS	4	The BMW Classic	1	L	2400

TABLE 68. AUSTRALIAN- NEW ZEALAND CLASSIFICATIONS 2004/05– FOUR YEAR OLDS AND UPWARDS

Rating	Horse	Age	Sex	Date	Track	Country	Finish	Race	Group	Categ	Dist
124	MAKYBE DIVA (GB)	6	M	19-Mar-05	RHIL	AUS	1	The BMW Classic	1	L	2400
120	GRAND ARMEE (AUS)	6	G	02-Apr-05	RAND	AUS	1	Queen Elizabeth Stakes	1	I	2000
119	VINNIE ROE (IRE)	7	H	02-Nov-04	FLEM	AUS	1	Melbourne Cup	1	E	3200
118	ELVSTROEM (AUS)	4	H	26-Feb-05	CAUL	AUS	1	St George Stakes	2	I	1800
117	MUMMIFY (AUS)	5	G	09-Oct-04	CAUL	AUS	1	Caulfield Stakes	1	I	2000
116	FIELDS OF OMAGH (AUS)	7	G	23-Oct-04	MV	AUS	2	WS Cox Plate	1	I	2040
116	PRIVATE STEER (AUS)	5	M	11-Sep-04	RHIL	AUS	3	Theo Marks Handicap	2	S	1300
116	WINNING BELLE (NZ)	4	M	12-Mar-05	FLEM	AUS	2	Australian Cup	1	I	2000
115	CAPE OF GOOD HOPE (GB)	6	G	19-Feb-05	MV	AUS	1	Australia Stakes	1	S	1200
115	REGAL ROLLER (AUS)	5	G	05-Mar-05	CAUL	AUS	1	Futurity Stakes	1	M	1400
115	SHAMEKHA (AUS)	4	M	02-Apr-05	RAND	AUS	1	All Aged Stakes	1	M	1400
115	SPARK OF LIFE (AUS)	4	G	11-Sep-04	MV	AUS	1	Manikato Stakes	1	S	1200
115	STARCRAFT (NZ)	4	H	23-Oct-04	MV	AUS	3	WS Cox Plate	1	I	2040
115	VOUVRAY (NZ)	4	M	19-Mar-05	RHIL	AUS	3	The BMW Classic	1	L	2400

Note - Distance Categories

Short - <1400m

Middle - 1400m - 1800m

Intermediate - 1801m - 2199m

Long - 2200m - 2799m

Extended - 2800m +

# CLASSIFICATIONS BY AGE

The ANZ Classifications are an accurate tool in comparing the merits of horses' performances over time. From season 2000/01 onwards the weights of those horses listed have been aligned with those weights of the other age categories and weights prior to this season have been retrospectively adjusted in the list below.

TABLE 69. HIGHEST RATING TWO YEAR OLDS 1994/95 - 2004/05

Year	Horse	Age	Wgt
2004/05	FASHIONS AFIELD	2F	106
2003/04	DANCE HERO	2C	111
2002/03	HASNA	2F	105
2001/02	VICTORYVEIN	2F	107
2000/01	VISCOUNT	2C	106
1999/00	ASSERTIVE LAD	2G	107
1998/99	ALIGN	2C	107
1997/98	PROWL	2G	107
1996/97	ENCOUNTER	2C	111
1995/96	MERLENE	2F	111
1994/95	OCTAGONAL (NZ)	2C	108



TABLE 70. HIGHEST RATING THREE YEAR OLDS BY DISTANCE 1994/95 - 2004/05

Year	3yo Sprint (to 1399m)	Age Sex	Wgt	3yo Middle (1400 - 1800m)	Age Sex	Wgt	3yo Intermediate (1801-2199m)	Age Sex	Wgt	3yo Long (2200m & beyond)	Age Sex	Wgt
2004/05	ALINGHI	3C	118	SAVABEEL	3C	115	SAVABEEL	3C	118	PLASTERED	3G	114
	FASTNET ROCK	3C	118									
2003/04	EXCEED AND EXCEL	3C	117	RESET	3C	115	NIELLO	3C	114	STARCRAFT (NZ)	3C	115
2002/03	CHOISIR	3C	118	BEL ESPRIT	3C	112	HELENUS	3C	108	CLANGALANG	3C	109
2001/02	MISTEGIC	3G	113	LONHRO	3C	114	VISCOUNT	3C	120	DON EDUARDO (NZ)	3C	112
	NORTH BOY	3G	113									
2000/01	ASSERTIVE LAD	3G	112	ASSERTIVE LAD	3G	116	UNIVERSAL PRINCE	3C	111	UNIVERSAL PRINCE	3C	116
1999/00	TESTA ROSSA	3C	116	REDOUTE'S CHOICE	3C	116				FAIRWAY	3G	114
				TESTA ROSSA	3C	116						
1998/99	ISCA	3F	114	SKY HEIGHTS (NZ)	3G	116				SKY HEIGHTS (NZ)	3G	116
				SUNLINE (NZ)	3F	116						
1997/98	GENERAL NEDIYM	3C	118	ENCOUNTER	3C	118				GOLD GURU	3G	118
				GOLD GURU	3G	118						
1996/97	MOUAWAD (NZ)	3C	116	MOUAWAD (NZ)	3C	118				EBONY GROSVE (NZ)	3C	113
									GREAT COMMAND (NZ)**	3G	113	
1995/96	OUR MAIZCAY (NZ)	3C	116	OCTAGONAL (NZ)	3C	122				OCTAGONAL (NZ)	3C	122
1994/95	DANEWIN	3C	114	DANEWIN	3C	116				DANEWIN	3C	114

TABLE 71. HIGHEST RATING FOUR YEAR OLDS AND OVER BY DISTANCE 1994/95 - 2004/05

Year	4yo+ Sprint (to 1399m)	Age Sex	Wgt	4yo+ Middle (1400 - 1800m)	Age Sex	Wgt	4yo+Intermediate (1801 - 2199m)	Age Sex	Wgt	4yo+ Long/Extended (2200m & beyond)	Age Sex	Wgt
2004/05	PRIVATE STEER	5M	116	ELVSTROEM	4H	118	GRAND ARMEE	6G	120	MAKYBE DIVA (GB)	6M	124
2003/04	OUR EGYPTIAN RAINE	5M	113	LONHRO	5H	120	LONHRO	5H	118	MAKYBE DIVA (GB)	5M	116
2002/03	RUBITANO	5G	116	LONHRO	4H	117	NORTHERLY	6G	124	NORTHERLY	6G	122
	SPINNING HILL	6M	116									
2001/02	FALVELON	5H	115	SUNLINE (NZ)	6F	124	NORTHERLY	5G	122	ETHEREAL (NZ)	4M	119
2000/01	SUNLINE (NZ)	5M	121	SUNLINE (NZ)	5F	126	SUNLINE (NZ)	5M	126	FAIRWAY	4G	115
										TIE THE KNOT	6G	115
1999/00	SUNLINE (NZ)	4M	121	SUNLINE (NZ)	4F	124				TIE THE KNOT	5G	120
1998/99	DANE RIPPER	5M	119	MIGHT AND POWER (NZ)	5G	128				MIGHT AND POWER (NZ)	5G	127
1997/98	MIGHT AND POWER (NZ)	4G	120	MIGHT AND POWER (NZ)	4G	126				MIGHT AND POWER (NZ)	4G	127
1996/97	MAHOGANY	6G	121	SAINTLY	4G	125				SAINTLY	4G	125
1995/96	HAREEBA	5G	117	DORIE MUS (NZ)	5G	119				DORIE MUS (NZ)	4G	120
				MAHOGANY	5G	119				VINTAGE CROP (IRE)	9G	120
1994/95	JEUNE (GB)	6H	122	JEUNE (GB)	6H	124				JEUNE (GB)	6H	124

\*\* Indicates horse accredited through New Zealand Group Racing system



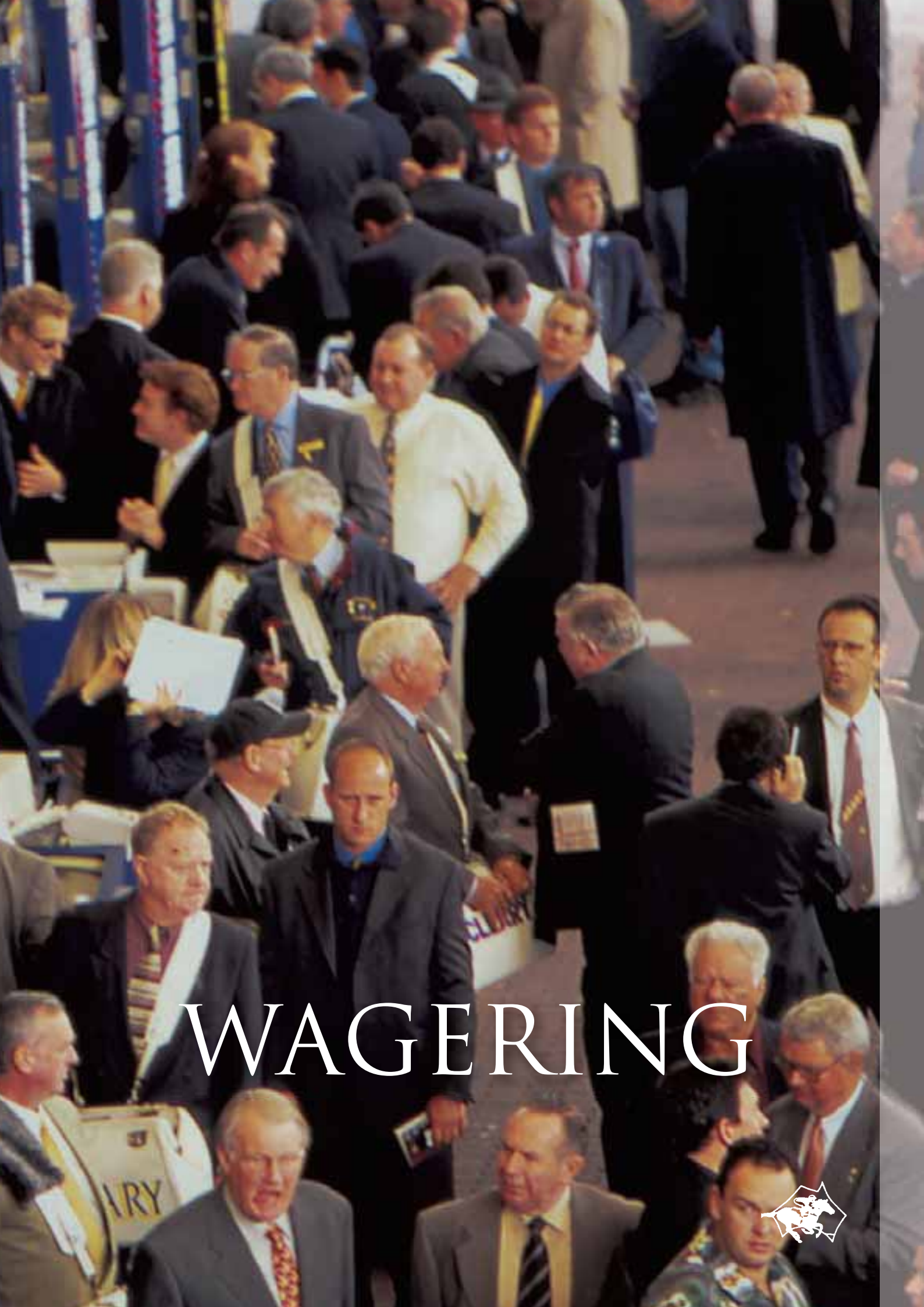
OAKBANK, SOUTH AUSTRALIA

A high-angle, slightly blurred photograph of a busy betting ring. Numerous people, mostly men in suits, are seen from behind or in profile, focused on their work. They are surrounded by tall, blue and yellow TAB (Totalisator Automata Board) machines. The scene is filled with activity, with people looking at papers and interacting with the machines. The lighting is bright, typical of an indoor sports venue.

## KEY FACTS

- Total wagering on thoroughbreds increased by 4.9% in the 2004/05 season.
- New South Wales remained Australia's leading wagering state and accounted for 33.4% of thoroughbred wagering.
- TAB turnover accounted for 74.9% of total thoroughbred turnover compared to 25.1% by Bookmakers.

THE BETTING RING IN ACTION



# WAGERING



# THOROUGHBRED WAGERING RACING TURNOVER

TABLE 72. THOROUGHBRED WAGERING TURNOVER 2004/2005 (BY STATE)

WAGERING FORM	NSW (\$M)	VIC (\$M)	QLD (\$M)	SA# (\$M)	WA (\$M)	TAS# (\$M)	ACT (\$M)	NT*# (\$M)	Total (\$M)
TOTE - On Course	215.82	174.59	97.62	31.09	48.39	5.90	4.88	10.93	589.22
TAB - Agency	2,432.62	1,664.14	1,035.40	403.59	546.63	177.78	83.95	52.69	6,396.80
- Phone	399.20	464.38	228.28	48.17	49.32	24.61	15.45	7.20	1,236.61
- Internet	220.31	99.77	72.84	15.90	41.41	3.63	18.31	13.59	485.76
- Fixed Odds	17.05	14.55	11.44	2.52	4.87	4.16	0.38	0.66	55.63
Total TAB Off Course	3,069.18	2,242.84	1,347.96	470.18	642.23	210.18	118.09	74.14	8,174.80
Total Pari-Mutuel	3,285.00	2,417.43	1,445.58	501.27	690.62	216.08	122.97	85.07	8,764.02
Bookmakers - On Course	389.46	284.73	135.81	46.55	78.26	2.29	8.18	7.76	953.04
Bookmakers - Phone	231.53	262.39	102.68	92.89	22.53	0.00	30.30	854.61	1,596.93
- Internet	5.71	0.00	0.00	0.00	1.41	0.00	13.32	366.26	386.70
Total Bookmakers - Off Course	237.24	262.39	102.68	92.89	23.94	0.00	43.62	1220.87	1983.63
Total Bookmakers	626.70	547.12	238.49	139.44	102.20	2.29	51.80	1,228.63	2,936.67
TOTAL WAGERING	3,911.70	2,964.55	1,684.07	640.71	792.82	218.37	174.77	1,313.70	11,700.69

Notes: Agency refers to all outlets, pubs and clubs etc. This was listed previously as 'off course'

Fixed Odds Wagering has been excluded from agency, phone & internet figures and provided separately

\* Northern Territory Bookmakers Figures approximated as breakup of Off Course Turnover was not provided. Phone turnover approximately 70% and Internet approximately 30% of combined figures.

# Indicates that Agency, Phone & Internet breakdowns for TAB's were not provided, figures are an estimate of the Off Course Turnover, which was provided.

Source: Tables 77 - 89 TAB and Tote turnover provided by the TAB in each State

Bookmaking figures provided by Government Department of Racing in each State (QLD bookmakers turnover from Queensland Racing).

TABLE 73. THOROUGHBRED WAGERING TURNOVER 2004/2005 AS A PERCENTAGE OF AUSTRALIAN THOROUGHBRED TURNOVER

Wagering Form	NSW (\$M)	VIC (\$M)	QLD (\$M)	SA (\$M)	WA (\$M)	TAS (\$M)	ACT (\$M)	NT (\$M)	Total (\$M)
TOTE - On Course	36.63%	29.63%	16.57%	5.28%	8.21%	1.00%	0.83%	1.86%	100.00%
TAB - Agency	38.03%	26.02%	16.19%	6.31%	8.55%	2.78%	1.31%	0.82%	100.00%
- Phone	32.28%	37.55%	18.46%	3.90%	3.99%	1.99%	1.25%	0.58%	100.00%
- Internet	45.35%	20.54%	15.00%	3.27%	8.52%	0.75%	3.77%	2.80%	100.00%
- Fixed Odds	30.65%	26.15%	20.56%	4.53%	8.75%	7.48%	0.68%	1.19%	100.00%
Total TAB Off Course	37.54%	27.44%	16.49%	5.75%	7.86%	2.57%	1.44%	0.91%	100.00%
Total Pari-Mutuel	37.48%	27.58%	16.49%	5.72%	7.88%	2.47%	1.40%	0.97%	100.00%
Bookmakers - On Course	40.87%	29.88%	14.25%	4.88%	8.21%	0.24%	0.86%	0.81%	100.00%
Bookmakers - Phone	14.50%	16.43%	6.43%	5.82%	1.41%	0.00%	1.90%	53.52%	100.00%
- Internet	1.48%	0.00%	0.00%	0.00%	0.36%	0.00%	3.44%	94.71%	100.00%
Total Bookmakers - Off Course	11.96%	13.23%	5.18%	4.68%	1.21%	0.00%	2.20%	61.55%	100.00%
Total Bookmakers	21.34%	18.63%	8.12%	4.75%	3.48%	0.08%	1.76%	41.84%	100.00%
TOTAL WAGERING	33.43%	25.34%	14.39%	5.48%	6.78%	1.87%	1.49%	11.23%	100.00%

TABLE 74. THOROUGHBRED WAGERING TURNOVER 2004/2005 AS A PERCENTAGE OF TOTAL STATE THOROUGHBRED TURNOVER

Wagering Form	NSW (\$M)	VIC (\$M)	QLD (\$M)	SA (\$M)	WA (\$M)	TAS (\$M)	ACT (\$M)	NT (\$M)	Total (\$M)
TOTE - On Course	5.52%	5.89%	5.80%	4.85%	6.10%	2.70%	2.79%	0.83%	5.04%
TAB - Agency	62.19%	56.13%	61.48%	62.99%	68.95%	81.41%	48.03%	4.01%	54.67%
- Phone	10.21%	15.66%	13.56%	7.52%	6.22%	11.27%	8.84%	0.55%	10.57%
- Internet	5.63%	3.37%	4.33%	2.48%	5.22%	1.66%	10.48%	1.03%	4.15%
- Fixed Odds	0.44%	0.49%	0.68%	0.39%	0.61%	1.91%	0.22%	0.05%	0.48%
Total TAB Off Course	78.46%	75.66%	80.04%	73.38%	81.01%	96.25%	67.57%	5.64%	69.87%
Total Pari-Mutuel	83.98%	81.54%	85.84%	78.24%	87.11%	98.95%	70.36%	6.48%	74.90%
Bookmakers - On Course	9.96%	9.60%	8.06%	7.27%	9.87%	1.05%	4.68%	0.59%	8.15%
Bookmakers - Phone	5.92%	8.85%	6.10%	14.50%	2.84%	0.00%	17.34%	65.05%	13.65%
- Internet	0.15%	0.00%	0.00%	0.00%	0.18%	0.00%	7.62%	27.88%	3.31%
Total Bookmakers Off Course	6.06%	8.85%	6.10%	14.50%	3.02%	0.00%	24.96%	92.93%	16.95%
Total Bookmakers	16.02%	18.46%	14.16%	21.76%	12.89%	1.05%	29.64%	93.52%	25.10%
TOTAL WAGERING	100.00%	100.00%	100.00%	100.00%	100.00%	100.00%	100.00%	100.00%	100.00%

TABLE 75. NEW SOUTH WALES THOROUGHBRED WAGERING TURNOVER 1999/00 - 2004/05

Wagering Form	1999/00 (\$M)	2000/01 (\$M)	2001/02 (\$M)	2002/03 (\$M)	2003/04 (\$M)	2004/05 (\$M)	Total (\$M)	% Change 2004 - 2005
TOTE - On Course	239.30	220.00	208.77	230.00	229.64	215.82	1,343.53	-6.02%
TAB - Agency	2,712.10	2,790.20	2,820.50	2,347.50	2,392.98	2,432.62	15,495.90	
- Phone	†	396.50	†	385.00	381.26	399.20	1,561.96	
- Internet	†	79.30	†	157.00	195.06	220.31	431.36	
- Fixed Odds	†	†	†	†	20.34	17.05	20.34	
Total TAB Off Course	2,712.10	3,266.00	2,820.50	2,889.50	2,989.64	3,069.18	17,509.56	2.66%
Total Pari-Mutuel	2,951.40	3,486.00	3,029.27	3,119.50	3,219.28	3,285.00	18,853.09	2.04%
Bookmakers - On Course	408.00	319.30	336.62	404.93	400.88	389.46	2,259.19	-2.85%
Bookmakers - Phone	89.50	112.00	121.31	180.30	228.57	231.53	963.21	
- Internet	†	0.20	0.07	0.55	5.57	5.71	12.10	
Total Bookmakers Off Course	89.50	112.20	121.38	180.85	234.14	237.24	975.31	1.32%
Total Bookmakers	497.50	431.50	430.80¥	585.78	635.02	626.70	3,234.50	-1.31%
TOTAL WAGERING	3,448.90	3,917.50	3,460.07	3,705.28	3,854.30	3,911.70	22,087.59	1.49%

TABLE 76. VICTORIAN THOROUGHBRED WAGERING TURNOVER 1999/00 - 2004/05

Wagering Form	1999/00 (\$M)	2000/01 (\$M)	2001/02 (\$M)	2002/03 (\$M)	2003/04 (\$M)	2004/05 (\$M)	Total (\$M)	% Change 2003 - 2004
TOTE - On Course	166.60	164.70	164.62	173.94	169.93	174.59	1,014.38	2.74%
TAB - Agency	1,836.30	1,450.50	1,509.19	1,552.22	1,590.48	1,664.14	9,602.83	
- Phone	†	456.00	489.69	516.78	478.70	464.38	2,405.55	
- Internet	†	2.30	†	§	64.74	99.77	67.04	
- Fixed Odds	†	†	†	†	11.54	14.55	11.54	
Total TAB Off Course	1,836.30	1,908.80	1,998.88	2,069.00	2,145.46	2,242.84	12,086.96	4.54%
Total Pari-Mutuel	2,002.90	2,073.50	2,163.50	2,242.94	2,315.39	2,417.43	13,101.34	4.41%
Bookmakers - On Course	272.00	215.80	264.67	293.68	299.08	284.73	1,629.96	-4.80%
Bookmakers - Phone	97.60	118.30	145.51	186.96	225.41	262.39	1,036.17	
- Internet	0.00	0.00	0.00	0.00	0.00	0.00	0.00	
Total Bookmakers Off Course	97.60	118.30	145.51	186.96	225.41	262.39	1,036.17	16.41%
Total Bookmakers	369.60	334.10	410.18	480.64	524.49	547.12	2,666.13	4.31%
TOTAL WAGERING	2,372.50	2,407.60	2,573.68	2,723.58	2,839.88	2,964.55	15,767.47	4.39%

† Unavailable

§ Incl in Phone Total

¥ Not a Total (adjusted for bets back)



# THOROUGHBRED WAGERING RACING TURNOVER BY STATE

TABLE 77. QUEENSLAND THOROUGHBRED WAGERING TURNOVER 1999/00 - 2004/05

Wagering Form	1999/00 (\$M)	2000/01 (\$M)	2001/02 (\$M)	2002/03 (\$M)	2003/04 (\$M)	2004/05 (\$M)	Total (\$M)	% Change 2004 - 2005
TOTE - On Course	90.70	94.80	89.19	92.64	93.14	97.62	558.09	4.81%
TAB - Agency	1,120.20	1,129.60	797.65	921.64	985.23	1,035.40	5,989.72	
- Phone	†	†	268.56	184.13	228.97	228.28	909.94	
- Internet	†	†	77.08	87.43	50.81	72.84	288.16	
- Fixed Odds	†	†	†	†	9.54	11.44	20.98	
Total TAB Off Course	1,120.20	1,129.60	1,143.29	1,193.20	1,274.55	1,347.96	7,208.80	5.76%
Total Pari-Mutuel	1,210.90	1,224.40	1,232.48	1,285.84	1,367.69	1,445.58	7,766.89	5.70%
Bookmakers - On Course	191.50	182.20	143.16	191.22	152.31	135.81	996.20	-10.83%
Bookmakers - Phone	32.10	47.30	64.37	93.01	102.40	102.68	441.86	
- Internet	†	†	†	0.00	0.00	0.00	0.00	
Total Bookmakers Off Course	32.10	47.30	64.37	93.01	102.40	102.68	441.86	0.27%
Total Bookmakers	223.60	229.50	207.53	284.23	254.71	238.49	1,438.06	-6.37%
Total Wagering	1,434.50	1,453.90	1,440.01	1,570.07	1,622.40	1,684.07	9,204.95	3.80%

Note: QLD TAB total offcourse turnover is correct, however the Agency, Phone and Internet breakdowns have been estimated

TABLE 78 SOUTH AUSTRALIAN THOROUGHBRED WAGERING TURNOVER 1999/00 - 2004/05

Wagering Form	1999/00 (\$M)	2000/01 (\$M)	2001/02 (\$M)	2002/03 (\$M)	2003/04 (\$M)	2004/05 (\$M)	Total (\$M)	% Change 2004 - 2005
TOTE - On Course	37.60	25.50	24.29	31.48	28.56	31.09	178.52	8.86%
TAB - Agency	436.30	379.60	363.16	369.74	391.53	403.59	2,343.92	
- Phone	†	66.10	59.64	43.91	49.08	48.17	266.90	
- Internet	†	1.70	8.59	20.85	13.94	15.90	60.98	
- Fixed Odds	†	†	†	†	0.52	2.52	3.04	
Total TAB Off Course	436.30	447.40	431.39	434.50	455.07	470.18	2,674.84	3.32%
Total Pari-Mutuel	473.90	472.90	455.68	465.98	483.63	501.27	2,853.36	3.65%
Bookmakers - On Course	43.80	35.60	43.01	46.59	46.72	46.55	262.27	-0.37%
Bookmakers - Phone	16.00	30.90	52.25	27.41	40.69	92.89	260.14	
- Internet	†	†	†	0.00	0.00	0.00	0.00	
Total Bookmakers Off Course	16.00	30.90	52.25	27.41	40.69	92.89	260.14	128.28%
Total Bookmakers	59.80	66.50	95.26	74.00	87.41	139.44	522.41	59.52%
Total Wagering	533.70	539.40	550.94	539.98	571.04	640.71	3,375.77	12.20%

Note: SA TAB total offcourse turnover is correct, however the Agency, Phone and Internet breakdowns have been estimated

TABLE 79. WESTERN AUSTRALIAN THOROUGHBRED WAGERING TURNOVER 1999/00 - 2004/05

Wagering Form	1999/00 (\$M)	2000/01 (\$M)	2001/02 (\$M)	2002/03 (\$M)	2003/04 (\$M)	2004/05 (\$M)	Total (\$M)	% Change 2004 - 2005
TOTE - On Course	47.70	46.60	46.33	47.69	44.52	48.39	281.23	8.69%
TAB - Agency	504.70	446.80	458.04	476.34	497.47	546.63	2,929.98	
- Phone	†	41.50	39.13	44.85	45.04	49.32	219.84	
- Internet	†	9.20	12.59	20.01	25.29	41.41	108.50	
- Fixed Odds	†	†	†	†	4.08	4.87	8.95	
Total TAB Off Course	504.70	497.50	509.76	541.20	571.88	642.23	3,267.27	12.30%
Total Pari-Mutuel	552.40	544.10	556.09	588.89	616.40	690.62	3,548.50	12.04%
Bookmakers - On Course	114.10	98.50	102.30	97.53	78.88	78.26	569.57	-0.79%
Bookmakers - Phone	42.70	35.60	16.00	24.34	20.02	22.53	161.19	
- Internet	†	†	†	0.00	1.28	1.41	2.69	
Total Bookmakers Off Course	42.70	35.60	16.00	24.34	21.30	23.94	163.88	12.39%
Total Bookmakers	156.80	134.10	118.30	121.87	100.18	102.20	733.45	2.02%
Total Wagering	709.20	678.20	674.39	710.76	716.58	792.82	4,281.95	10.64%

† Unavailable

§ Incl in Phone Total

¥ Not a Total (adjusted for bets back)

TABLE 80. TASMANIAN THOROUGHBRED WAGERING TURNOVER 1999/00 - 2004/05

Wagering Form	1999/00 (\$M)	2000/01 (\$M)	2001/02 (\$M)	2002/03 (\$M)	2003/04 (\$M)	2004/05 (\$M)	Total (\$M)	% Change 2003 - 2004
TOTE - On Course	7.90	2.30	2.98	3.33	5.39	5.90	27.80	9.42%
TAB - Agency	146.00	133.10	143.58	168.94	170.45	177.78	939.85	
- Phone	†	26.40	28.04	26.41	24.04	24.61	129.50	
- Internet	†	†	†	1.19	2.22	3.63	7.04	
- Fixed Odds	†	†	†	†	3.90	4.16	8.06	
Total TAB Off Course	146.00	159.50	171.62	196.54	200.61	210.18	1,084.45	4.77%
Total Pari-Mutuel	153.90	161.80	174.60	199.87	206.00	216.08	1,112.25	4.89%
Bookmakers - On Course	4.80	5.60	3.07	2.27	2.19	2.29	20.22	4.57%
Bookmakers - Phone	1.10	1.80	0.54	0.04	0.02	0.00	3.50	
- Internet	†	†	†	0.00	0.00	0.00	0.00	
Total Bookmakers Off Course	1.10	1.80	0.54	0.04	0.02	0.00	3.50	-100.00%
Total Bookmakers	5.90	7.40	3.61	2.31	2.21	2.29	23.72	3.62%
Total Wagering	159.80	169.20	178.21	202.18	208.21	218.37	1,135.97	4.88%

TABLE 81. ACT THOROUGHBRED WAGERING TURNOVER 1999/00 - 2004/05

Wagering Form	1999/00 (\$M)	2000/01 (\$M)	2001/02 (\$M)	2002/03 (\$M)	2003/04 (\$M)	2004/05 (\$M)	Total (\$M)	% Change 2004 - 2005
TOTE - On Course	8.80	5.8#	8.13	5.95	4.59	4.88	32.35	6.25%
TAB - Agency	86.10	104.8#	93.36	76.99	82.81	83.95	423.21	
- Phone	†	†	31.64	19.61	21.76	15.45	88.46	
- Internet	†	†	1.42	3.49	8.89	18.31	32.11	
- Fixed Odds	†	†	†	†	0.37	0.38	0.75	
Total TAB Off Course	86.10	0.00	126.42	100.09	113.83	118.09	544.53	3.75%
Total Pari-Mutuel	94.90	110.60	134.55	106.04	118.42	122.97	576.88	3.84%
Bookmakers - On Course	20.20	13.10	9.75	9.27	8.33	8.18	68.83	-1.80%
Bookmakers - Phone	36.90	15.00	17.33	21.09	28.52	30.30	149.14	
- Internet	†	0.03	5.71	19.88	30.61	13.32	69.55	
Total Bookmakers Off Course	36.90	15.03	23.04	40.97	59.13	43.62	218.69	-26.23%
Total Bookmakers	57.10	28.13	32.79	50.24	67.46	51.80	287.52	-23.21%
Total Wagering	152.00	138.73	167.34	156.28	185.88	174.77	864.40	-5.98%

Note:ACT Total Pari-Mutuel is correct, however the on course and off course break downs have been estimated

TABLE 82. NORTHERN TERRITORY THOROUGHBRED WAGERING TURNOVER 1999/00 - 2004/05

Wagering Form	1999/00 (\$M)	2000/01 (\$M)	2001/02 (\$M)	2002/03 (\$M)	2003/04 (\$M)	2004/05 (\$M)	Total (\$M)	% Change 2004 - 2005
TOTE - On Course	13.10	12.90	15.90	16.28	15.85	10.93	84.96	-31.04%
TAB - Agency	55.30	55.50	49.27	50.29	52.15	52.69	315.20	
- Phone	†	†	7.53	9.29	7.82	7.20	31.84	
- Internet	†	†	2.16	4.41	5.28	13.59	25.44	
- Fixed Odds	†	†	†	†	0.31	0.66	0.97	
Total TAB Off Course	55.30	55.50	58.96	63.99	65.56	74.14	373.45	13.09%
Total Pari-Mutuel	68.40	68.40	74.86	80.27	81.41	85.07	458.41	4.50%
Bookmakers - On Course	15.70	11.20	7.84	10.45	11.05	7.76	64.00	-29.77%
Bookmakers - Phone	81.30	161.70	411.69	578.11	635.78	854.61	2,723.19	
- Internet	†	17.90	102.92	247.16	423.85	366.26	1,158.10	
Total Bookmakers Off Course	81.30	179.60	514.61	825.27	1,059.63	1,220.87	3,881.29	15.22%
Total Bookmakers	97.00	190.80	522.45	835.72	1,070.68	1,228.63	3,945.29	14.75%
Total Wagering	165.40	259.20	597.31	915.99	1,152.09	1,313.70	4,403.70	14.03%

Note: NT TAB total offcourse turnover is correct, however the Agency, Phone and Internet breakdowns have been estimated

# Estimate

† Unavailable

§ Incl in Phone Total

¥ Not a Total (adjusted for bets back)

# THOROUGHBRED WAGERING

TABLE 83. THOROUGHBRED WAGERING TURNOVER 1990/91 - 2004/05

Year	TAB Off Course (\$M)	Tote On Course (\$M)	TAB Phone & Internet (\$M)	Total Pari-mutuel (\$M)	Bookmakers Phone & Internet (\$M)	Bookmakers On Course (\$M)	Total Bookmakers (\$M)	Total Wagering (\$M)
1990/91	5,838.0	678.0	-	6,516.0	-	2,047.0	2,047.0	8,563.0
1991/92	5,959.0	636.0	-	6,595.0	-	1,704.0	1,704.0	8,299.0
1992/93	5,862.0	617.0	-	6,479.0	-	1,455.0	1,455.0	7,934.0
1993/94	6,318.0	823.0	-	7,141.0	-	1,427.0	1,427.0	8,568.0
1994/95	6,377.0	799.0	N/A	7,176.0	303.0	1,359.0	1,662.0	8,838.0
1995/96	6,496.0	764.0	N/A	7,260.0	383.0	1,192.0	1,575.0	8,835.0
1996/97	6,533.0	697.0	N/A	7,230.0	366.0	1,045.0	1,411.0	8,641.0
1997/98	6,659.0	617.0	N/A	7,276.0	406.0	997.0	1,403.0	8,679.0
1998/99	6,667.0	575.0	N/A	7,242.0	427.0	1,008.0	1,435.0	8,677.0
1999/00	6,897.0	612.0	N/A	7,509.0	397.0	1,070.0	1,467.0	8,976.0
2000/01	6,490.0	572.0	1,079.0	8,141.0	518.0	881.0	1,399.0	9,540.0
2001/02	6,235.0	560.0	1,026.1	7,821.1	625.0	1,217.0	1,842.0	9,663.1
2002/03	5,964.0	601.3	1,524.0	8,089.3	1,389.3	1,045.5	2,434.8	10,524.1
2003/04	6,213.7	591.6	1,602.9	8,408.2	1,742.7	999.4	2,742.2	11,150.4
2004/05	6,452.4	589.2	1,722.4	8,764.0	1,983.6	953.0	2,936.6	11,700.6

Note: Phone betting figures start at 1994/95, as this was the first year phone betting was legal in all states.

Phone and Internet Figures not collated for TABs before 2000

Source: TAB and Tote turnover provided by the TAB in each State

Bookmaking figures provided by Government Department of Racing in each State (QLD bookmakers turnover from Queensland Racing).

CHART 11. THOROUGHBRED WAGERING TURNOVER 1990/91-2004/05

